

WINNING YOUR NEXT CLIENT
Creative Architects 2019

Tosin Oshinowo

NEW CLIENT or RETURNING CLIENT ?

from this



maryland mall

5/22/2016

16:35

37°C

maryland mall

Several people are walking on the paved area in front of the building.

A blue car is blurred in the foreground, moving past the building.

marylandmall 

SHOPRITE
U save

GENESIS
CINEMAS

purple money
LW
euphoria



Let's be your partner, move
your salary account to us

www.stanbicibtcbank.com



Stanbic
IBTC
Bank

Moving Forward™



15 NOV 2016

18:15

28° C





marylandmall

Don't get cash-strapped.
Use our Credit Card.



Standard
BFC
Bank

MoneyForward™

S 10 276
18.59
27C

marylandmall

SAMSUNG

MONTAIGNE PLACE

CAREER OPPORTUNITIES

- BRAND MANAGERS • OUTLET MANAGERS
- BUSINESS DEVELOPMENT EXECUTIVE
- SALES EXECUTIVE • MAKEUP ARTIST
- BEAUTY THERAPIST • PERSONAL ASSISTANT
- FACILITY MANAGER • COMPANY DRIVER
- SECURITY GUARD • INVENTORY ASSISTANT

If you are interested in any of these roles
please send by email your CV and role applying for to
careers@montaigneplace.com



MONTAIGNE PLACE

plug services

OSC COLLEGE OF FASHION

pharmas

U SHOPRITE \$save

Low Price
We Buy Big so you can buy small
UP TO 10% LESS
everyday

Low Price
No Specials and No Commitment
LOWER THAN LOW PRICES
everyday

Low Price
Just Plain and simple
LOWER THAN LOW PRICES
everyday

EXIT

EXIT TO SERVICE ENTRANCE



U SHOPRITE
\$ave

Everyday
Low Price
We Buy
Big Baskets

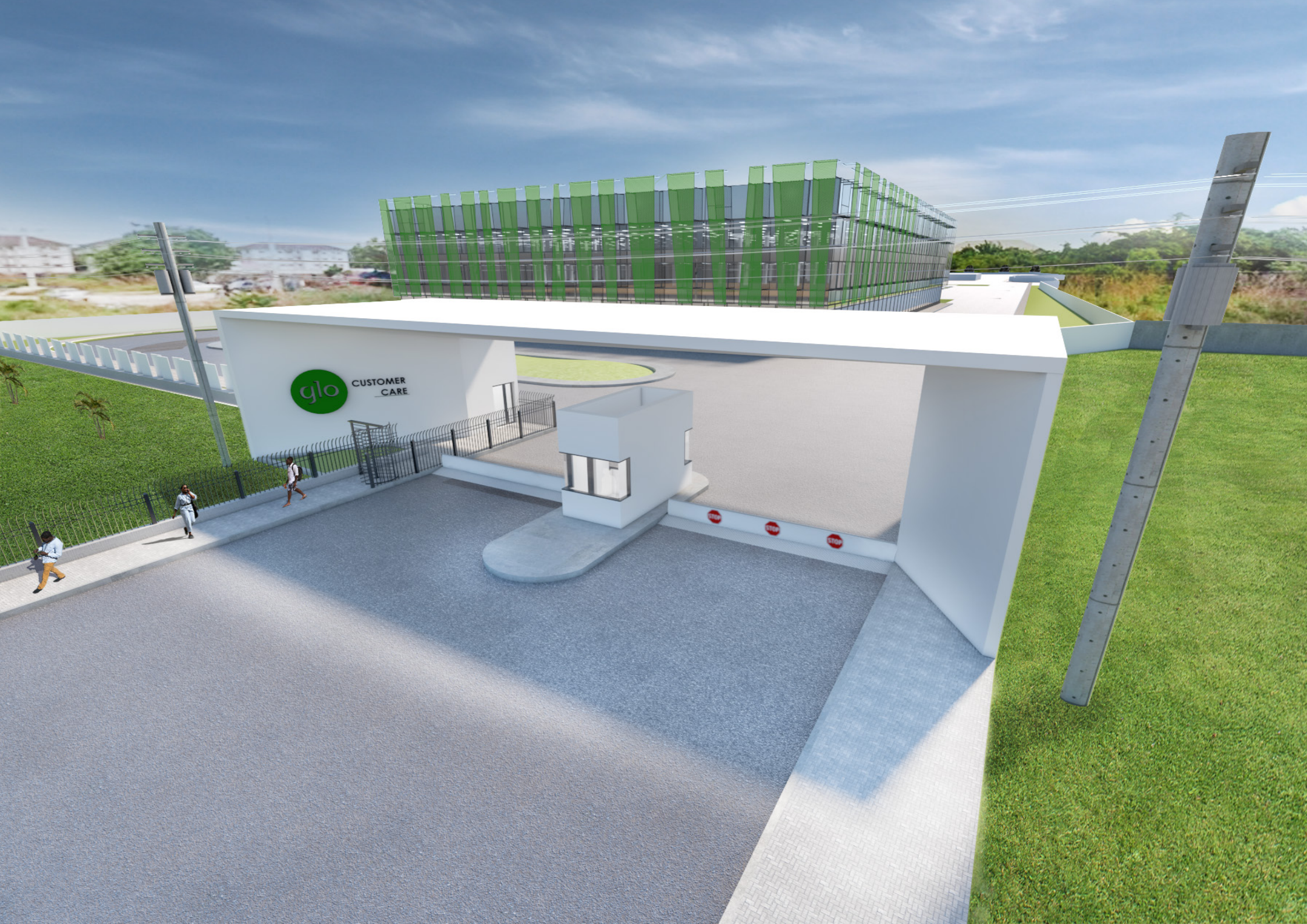
Everyday
Low Price
An Extra
and More
Competition

Everyday
Low Price
Just Plain
and Simple



to this





CUSTOMER CARE







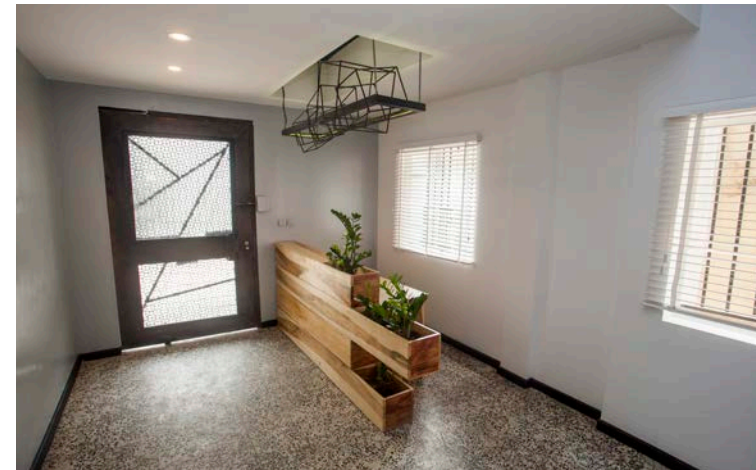
APPRENTICESHIP







DOCUMENT YOUR WORK





CREATE BRAND AWARENESS

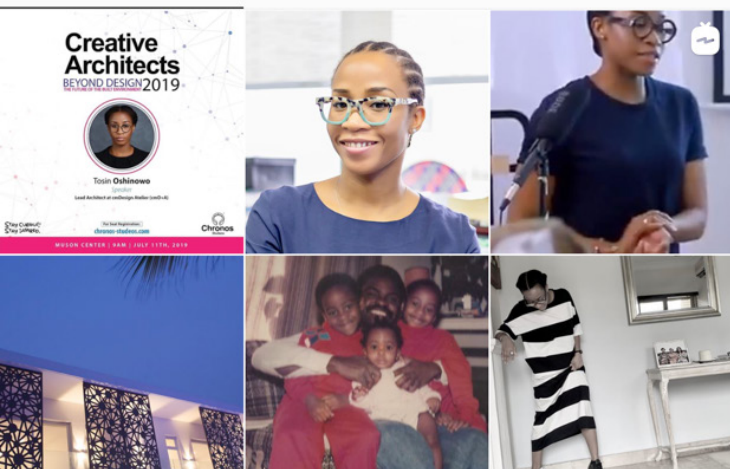
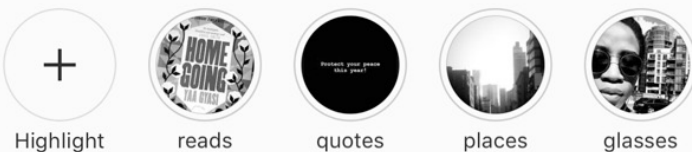
822 profile visits in the last 7 days



369 Posts, 13K Followers, 749 Following

tosin oshinowo AAdipl Designer I love lines... #architect @cmdesign_atelier @ile.ila www.cmdesign-atelier.com

Edit Profile Promotions Email



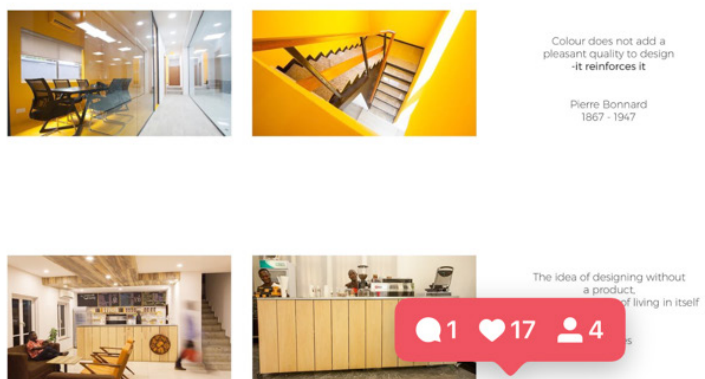
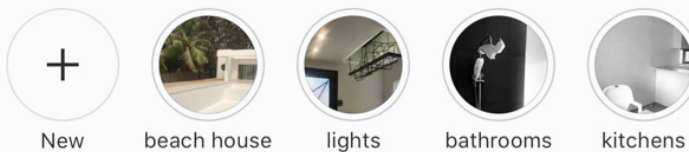
192 profile visits in the last 7 days



96 Posts, 3,082 Followers, 93 Following

cmdesign_atelier Architectural Designer we are a lagos-based architecture design practice and we love lines...! #beachhousequeen www.cmdesign-atelier.com 3rd Floor, CBC Tower, Olunmi Owa Street,, Lekki, Lagos, Nigeria

Edit Profile Promotions Contact



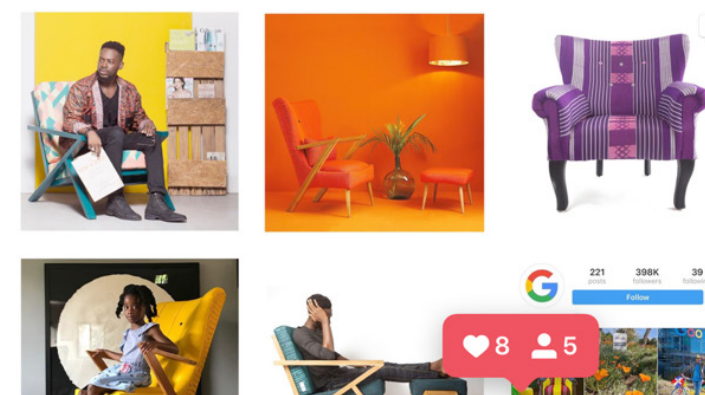
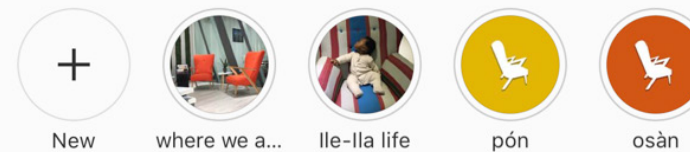
162 profile visits in the last 7 days



133 Posts, 6,702 Followers, 140 Following

House of Lines Furniture A nigerian lifestyle and furniture design brand founded by cmDesign Atelier #chair #armchairs #africanfurniture #asookecolors www.ile-ila.com 3rd Floor, CBC Tower, Olunmi Owa Street, Lekki, Lagos, Nigeria

Edit Profile Promotions Contact





GET YOUR PROJECT PUBLISHED

ArchDaily > Projects > Houses > Nigeria > cmDesign Atelier > 2019 > Sencillo Beach House / cmDesign Atelier

Sencillo Beach House / cmDesign Atelier

10:00 - 11 March, 2019 | Curated by Matheus Pereira

Save this project

Share Tweet Save



Architects : cmDesign Atelier
Location : Lagos, Nigeria
Category : Houses

Ad closed by Google

Stop seeing this ad

Why this ad? ⓘ

MORE HOUSES



Casa AJ / OmasC arquitectos



T19 / Reset Architecture



Bellad House / Khosla Associates

More Houses »

LIVIN SPACES

RENSOURCE ENERGY OFFICE BY CMDESIGN ATELIER FEATURES A FACADE OF DECOMMISSIONED SOLAR PANELS.

LIVIN SPACES × MAY 22, 2019 × ARCHITECTURE × INTERIORS

[Home](#) > [PROJECTS](#) > [ARCHITECTURE](#)

Ad closed by Google

[INTERVIEWS AND ARTICLES](#)

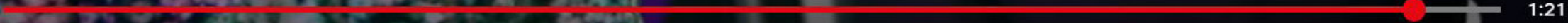
[COMPETITIONS](#)

[EVENTS](#)



COLLABORATE





1:21



Amazing Interiors S1:E10 Pink Palace, Waterfall Bedroom, House of Doo...





Tosin Oshinowo is a registered Architect in Federal Republic of Nigeria and also a member of the Royal Institute of the British Architects. She has been lead Architect at cmDesign Atelier (cmD+A) since 2012. cmD+A is an architecture design consultancy practice based in Lagos and is best known from the Maryland Mall, which opened in June 2016.

Her interests are in architectural history and socially responsive approaches in architecture design and urbanism. Her written work includes an article on 'the reclamation of public space in Lagos', which was published in October 2012. She also started a column in 2017 for Omneka Online titled the Afromodernist: Identity, Architecture & Sexuality, a bimonthly article exploring cultural issues to do with African Identity in a modern context. This was a spin-off from her TEDx Portharcourt talk on 'the the identity of an African Building' in November 2017.

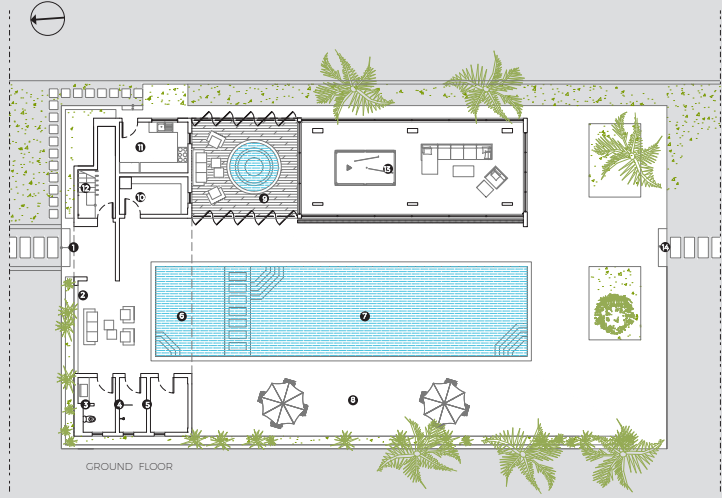
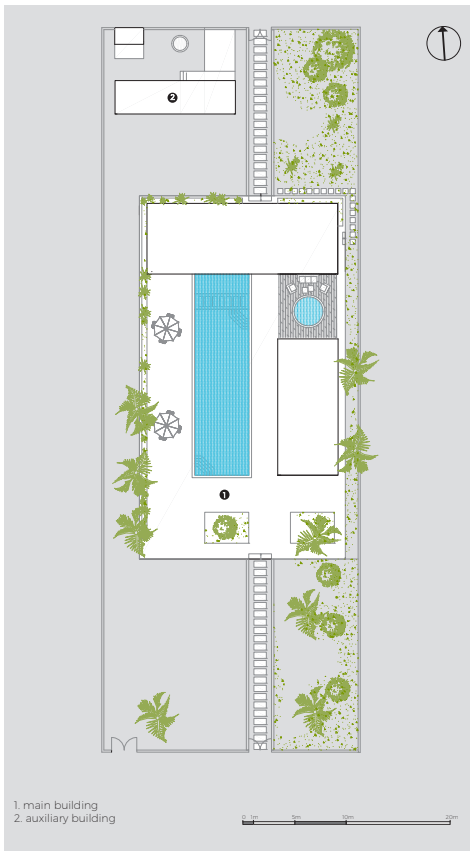
She enjoys collaboration projects with other creatives, for example, the 'Angles and Muse' artist foundation, done with acclaimed Nigerian artist Victor Ehikhamenor. The process was documented by Netflix's 'Amazing Interiors_episode 10' and was the only African project filmed for the series, which aired in June 2018.

In 2017, she created Ilé-Ilà, which means House of Lines in her Yoruba native language. It is a Lifestyle Furniture line designed and handmade in Lagos, Nigeria. The brand focuses on period-conscious furniture in a contemporary African content. As an Architect, she has a natural affinity towards Product Design. She is particularly interested in the functionality of chairs, but also placing them in a Nigerian-African context. Unlike her minimalist approach to Architecture, which often uses a mute palette, her furniture design aesthetic is a bright explosion of colour. Ilé-Ila retails international under 54Kibo.com in the United States and 1stdibs.com in the United Kingdom.

In 2017, she was nominated for the EbonyLife TV Sisterhood Awards for Entrepreneur of the year and also received a recognition from leading Ladies Africa as one of 100 most inspiring women in Nigeria. She also won the 3rd City People Real Estate Awards for Architect of the Year 2017 and in January 2018 she joined the Board for The Lagos Theatre Festival with the British Council. She will also co-curator in October 2019 the Lagos Biennial, titled, how to build a Lagoon from a bottle of Wine?" and she was recently awarded the Lord's Achievers Awards for Creativity, in celebration of World Achievers Day 2019.

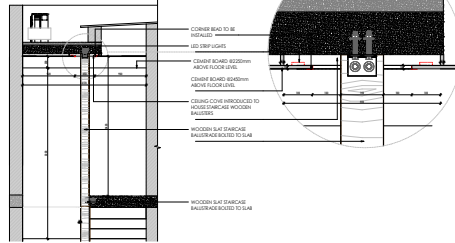


MILEAGE OVER MONEY

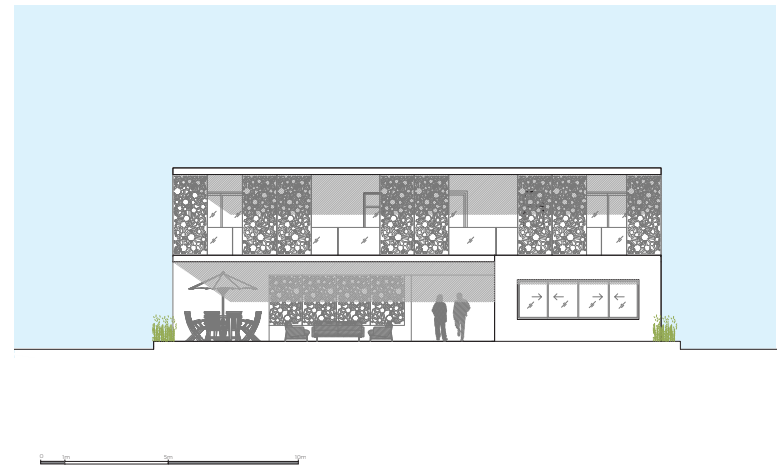
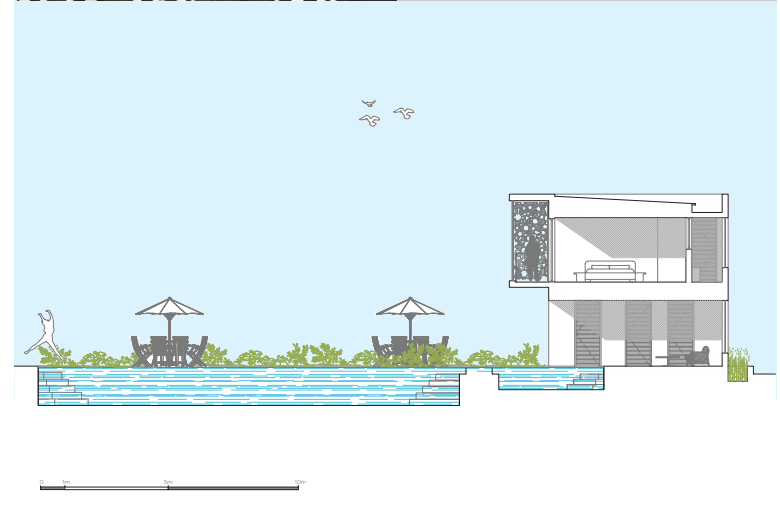
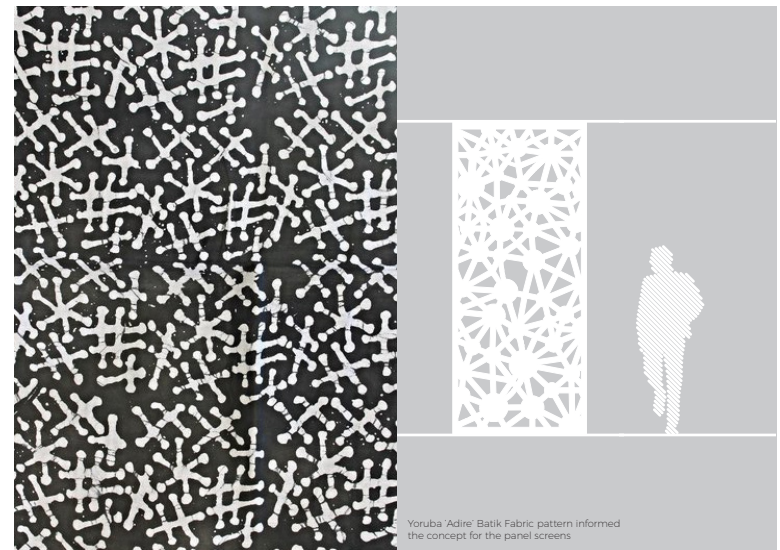
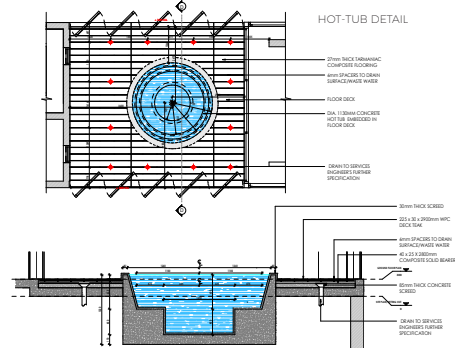


1. lagoon entrance
2. sit-out lounge
3. toilet
4. shower
5. pump room
6. shallow pool
7. deep pool
8. pool deck
9. hot tub
10. server room
11. kitchen
12. staircase
13. living room
14. staircase
15. bedroom 1
16. bedroom 1 en-suite
17. bedroom 2
18. bedroom 2 en-suite
19. bedroom 3
20. bedroom 3 en-suite
21. rear balcony
23. front balcony

STAIR BALUSTRADE DETAIL



HOT-TUB DETAIL







MASTERPLAN CONCEPT

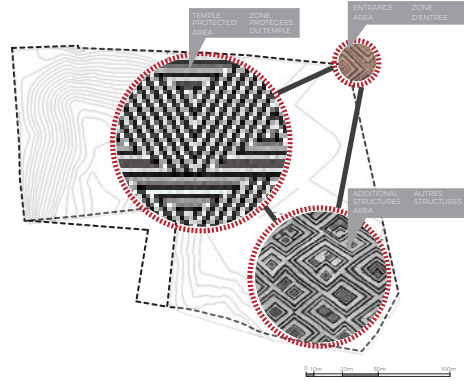
CONCEPT DU MASTERPLAN

One similarity between African culture and the Bahai religion can be seen in their symbols and forms. The triangle, for example, can be seen in most Bahai symbols and art, as well as in most African symbols.

This led to the idea of triangulation of activities on the site as a means of connecting the 3 major sections: the Temple, the entrance, and additional structures.

Il existe des traits communs entre la culture africaine et la religion Bahai dans les symboles et dans les formes. Le triangle, par exemple, est visiblement présent dans la plupart des modèles et des arts africains, ainsi que dans la plupart des symboles Bahai. Cela a conduit à l'idée de la triangulation des activités sur le site comme moyen de connecter les 3 grandes sections, le temple, l'entrée, et structures supplémentaires.

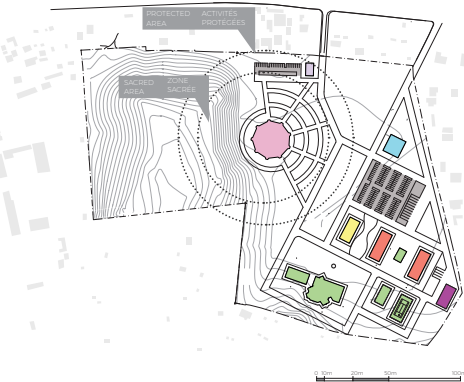
-  Bahai 9 pointed star, symbolizing unity and perfection. Étoile à 9 branches, symbolisant unité et perfection.
-  5 pointed star, the symbol of the Bahai faith. Étoile à 5 branches, symbole de la foi Bahai.
-  Congolese geometric pattern. Motif géométrique congolais.
-  African geometric pattern. Motif géométrique africain.



BUILDING-UP AREA

ZONE DE CONSTRUCTION

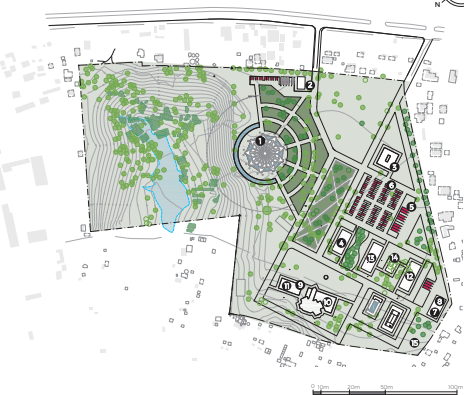
14.9K 1900m ²	TEMPLE
1.5K 170m ²	VEHICLE CENTRE
4.0K 450m ²	ADMINISTRATION
5.6K 600m ²	ACCOMMODATION
18.3K 200m ²	COMMON AREAS
12.4K 210m ²	COMMON AREAS
6.9K 97m ²	COMMON AREAS
3.9K 480m ²	COMMON AREAS
33.8K 97m ²	PARKING



MASTERPLAN DESIGN

CONCEPTION DU MASTERPLAN

- TREE ARBRES
 - PEOPLE PERSONNES
1. TEMPLE TEMPLE
 2. RECEPTION RÉCEPTION
 3. NSA OFFICE BUREAU DE LA NSA
 4. ADMINISTRATIVE OFFICE BUREAU ADMINISTRATIF
 5. COACH PARKING STATIONNEMENT DES ENTRAINEURS
 6. PRIVATE CAR PARKING PARKING PRIVÉ
 7. SERVICES ZONE - WATER ZONE DE SERVICES - EAU
 8. SERVICES ZONE - POWER ZONE DE SERVICES - ALIMENTATION
 9. CANTEN & KITCHEN CANTINE ET CUISINE
 10. MEETING HALL SALLE DE RÉUNION
 11. TOILET TOILETTE
 12. MALE ACCOMMODATION LOGEMENT DES HOMMES
 13. FEMALE ACCOMMODATION LOGEMENT DES FEMMES
 14. PRAYER ROOM SALLE DE PRIÈRE
 15. RECREATION ZONE ZONE DE LOISIRS
 16. WASTE INCINERATOR INCINÉRATEUR DE DÉCHETS



CONSTRUCT

We have drawn inspiration from the Kabu (also known as the Bakuba) people living in the south-eastern democratic republic of Congo.

The Kuba people are known for their textiles featuring distinctive geometric patterns. Their textile patterns demonstrate a taste for interrupting the expected line, they compose through juxtapositions of sharply differing units and abrupt shifts of form.

CONSTRUIRE

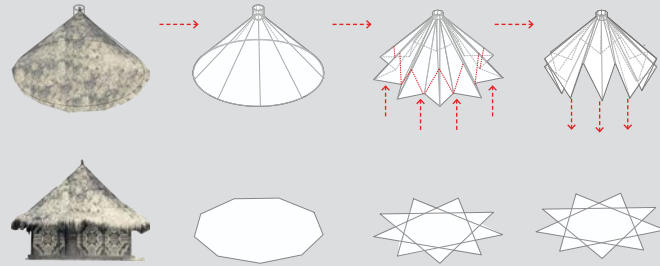
La source de notre inspiration vient du Kabu (communément connus le nom de Bakuba), les habitants vivant au sud-est du DRC entre Kasai et la rivière Sankuru. Le peuple de Kabu est connu pour leur textile motif géométrique distinctif.

Leurs motifs textiles démontrent un goût pour casser la ligne attendue, ils composent par juxtapositions d'unités radicalement différentes et de brusques changements de forme.



CONCEPT DEVELOPMENT

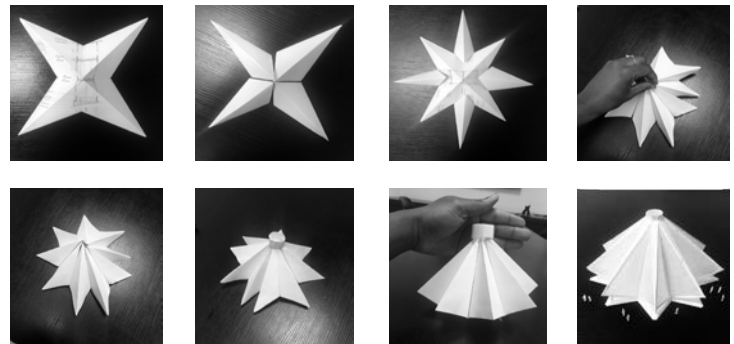
CONCEPTION ET RÉALISATION DU PLAN



Vernacular architecture of a cone that's popular with African vernacular architecture. Extrudé sur un polygone à 9 côtés. Remodeled into a star-shaped pyramid. Rénové en forme d'étoile pyramidale. Edges are cut off to create openings into the form. Les bords sont coupés pour créer ouvertures dans la forme.

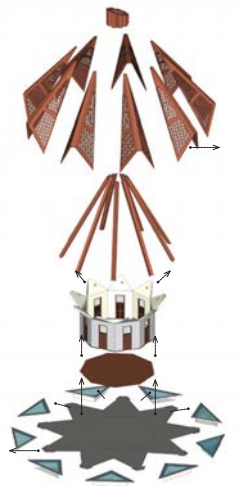
PHYSICAL DEVELOPMENT MODELS

ÉTAPE DU DÉVELOPPEMENT PHYSIQUE DU MODÈLE



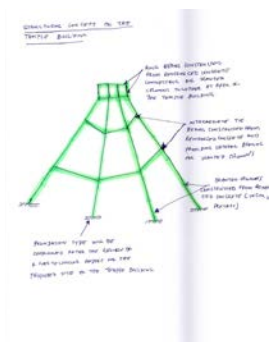
EXPLODED MODEL

modèle dépiécés



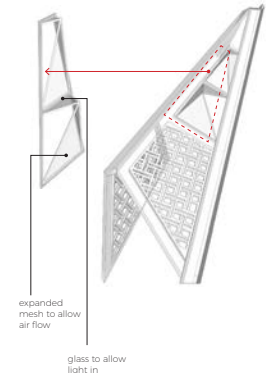
STRUCTURAL REPORT

CONCEPT STRUCTUREL DU BÂTIMENT DU TEMPLE



WINDOW PANEL DETAIL

DÉTAILS FEI





BELIEVE YOUR HYPE ...!

BUT REMEMBER

THERE ARE THOSE WHO DON'T KNOW.

THOSE WHO 'KNOW' THEY 'DON'T KNOW'
& THOSE WHO 'DON'T KNOW' THAT THEY
'DON'T KNOW'.....

DO NOT BE THE LATTER

